



# Hope Industrial Systems, Inc.

www.HopeIndustrial.com • Toll Free: (877) 762-9790 • International: +1 (678) 762-9790 • E-mail: sales@HopeIndustrial.com

## Data Sheet: Universal Mount Monitors and Touch Screens

NEMA 12/4/4X, IP65/IP66  
15"/17"/19"/19.5"/22"/23.8"

### Features

- ▶ 15", 17", 19", 19.5", 22", or 23.8" LCD
- ▶ NEMA 4/12 or NEMA 4/4X/12, IP65/66 rated
- ▶ UL Rated for Hazardous Locations: Class I, II, III, Division 2
- ▶ Bright, high contrast, and ultra-wide viewing angles
- ▶ Field-proven MTBF of more than 250,000 hours
- ▶ Touch Screen, Glass, Acrylic, and Food Protection window options
- ▶ VESA and side mounting holes standard on all models
- ▶ Small size – only 71 mm to 83 mm (2.80" to 3.25") deep
- ▶ Stainless steel and black carbon steel enclosure options
- ▶ Industrial Certifications: UL/EN/IEC62368-1, UL Listed, UL 50E, FCC Class A, CE

### Product Description

Hope Industrial Systems' Universal Mount Industrial Monitors are designed to provide the industrial user with excellent picture quality and rugged design for reliable continuous operation.

Universal Mount Monitors are extremely versatile and can be mounted to the floor on a pedestal, attached to a wall, column, or post, or even hung from the ceiling: anywhere in the factory a display or touch screen is needed.

These monitors are backed by industrial certifications (including 3rd-party environmental testing) and an industry-leading 5-year warranty.

### Optional Accessories

- ▶ Yoke Mounts
- ▶ Free-standing pedestals
- ▶ Multiple cable exit options
- ▶ Arm and wall mount kits
- ▶ KVM Extenders
- ▶ Keyboards and keyboard trays
- ▶ Benchtop mounting kits
- ▶ Cable options up to 300 m (1000')



### About Hope Industrial Systems

Hope Industrial provides industrial flat panel monitors and touch screens with superior quality and up-to-date features that are relevant to industrial applications.

We house this advanced technology in a variety of rugged enclosures that allow the user to put their displays wherever they are needed in the factory. We assure our customers of high reliability over time and back it up with an industry-leading warranty.

We provide all of these benefits at a price that is significantly less than comparable industrial offerings. And finally, we offer the best sales, support and service in the industry:

- ▶ 5-year limited warranty on all monitors
- ▶ 24-48-hour repair turnaround (most models)
- ▶ Same day shipment lead time (most models)
- ▶ 30-day money-back guarantee



Universal Mount Monitor on Industrial Yoke Mount with KVM Extender.



Universal Mount Monitor mounted on NEMA 4X Heavy Industrial Arm Mount.



Full workstation configuration with PC enclosure, keyboard, yoke, and pedestal.



Universal Mount Monitor mounted on VESA Radial Arm.

# Universal Mount Industrial Monitors and Touch Screens

## Monitor Overview

**Rear View**

Depth only:  
2.80" (15")  
3.25" (17", 19", 19.5", 22", 23.8")

Optional Yoke mount provides full tilt/swivel

**Rear View with KVM Extender Option**

Depth with KVM Extender only:  
4.60" (15")  
4.90" (17", 19", 19.5", 22", 23.8")

External rear access to monitor controls

Optional modular KVM Extender allows placement of the display up to 1000' away from computer!

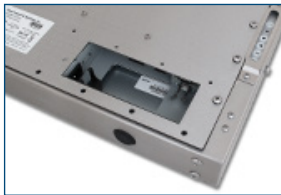
**NEMA 12/4, IP65/66 Black Carbon Steel or NEMA 4X, IP65/66 Stainless Steel enclosure**

VESA mounting holes standard on all models!

15", 17", 19", 19.5", 22", or 23.8" Monitor with:  
- Touch Screen,  
- Tempered Glass, or  
- Acrylic Window

Sealed rear cover provides NEMA 4 or 4X protection

## Cable Exit Options



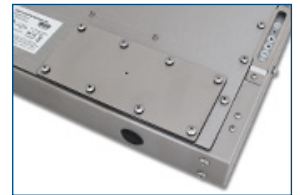
Opening to Internal Connectors



Compression Gland (NEMA 2, 4, or 4X)



Conduit Cable Exit (NEMA 4 or 4X)



Pilot Hole Cover Plate (NEMA 4 or 4X)

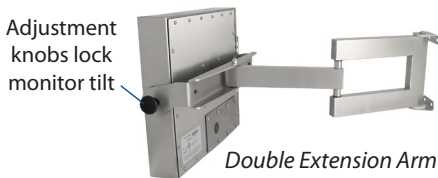
## Mounting Options

### Heavy Industrial Mounts

Rugged designs ideal for even the harshest environments. Available in NEMA 4X stainless or NEMA 4 black powder-coated steel.

#### Heavy Industrial Arm Mounts

Space-saving designs with full range of motion



Double Extension Arm



Single Extension Arm

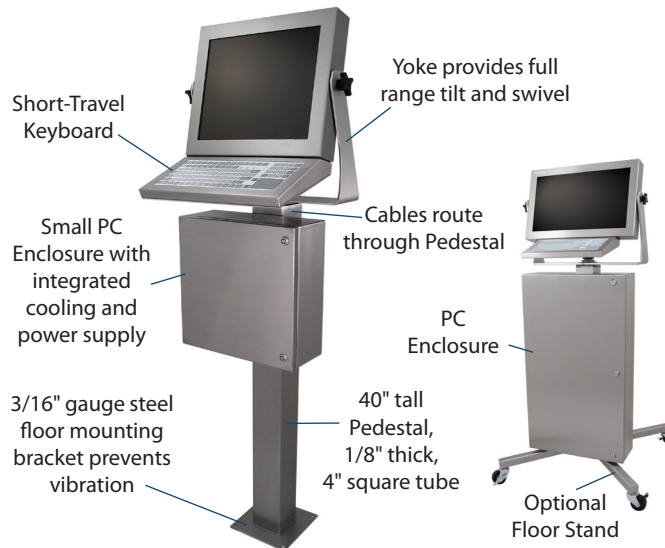
Rated at up to 100 lbs.



Wall Yoke

#### Heavy Industrial Yokes and Pedestals

Extremely sturdy free-standing configurations



### VESA Mounts

VESA holes allow for mounting on a Wall, Bench, Post, or Column



VESA Radial Arm



VESA Wall Mount



VESA Benchtop Stand

# Universal Mount Industrial Monitors and Touch Screens: Specifications

Model No. (Revision)	UM15 (Rev. H)	UM17 (Rev. H)	UM19 (Rev. H)	UM19.5 (Rev. B)	UM22 (Rev. C)	UM23.8 (Rev. A)
<b>Display</b>						
Type	Thin-film transistor (TFT) Active Matrix Liquid Crystal, LED Backlit					
Size	15" diagonal	17" diagonal	19" diagonal	19.5" diagonal	22" diagonal	23.8" diagonal
Image Size (W x H)	304 mm x 228 mm (12.0" x 9.0")	338 mm x 270 mm (13.3" x 10.6")	375 mm x 300 mm (14.8" x 11.8")	434.9 mm x 238.7 mm (17.1" x 9.4")	474 mm x 296 mm (18.7" x 11.7")	527 mm x 296 mm (20.75" x 11.67")
Native Resolution*	XGA (1024 x 768 @ 60Hz)	SXGA (1280 x 1024 @ 60Hz)		HD 1080p (1920 x 1080 @ 60Hz)	WSXGA+ (1680 x 1050 @ 60Hz)	HD 1080p (1920 x 1080 @ 60Hz)
Aspect Ratio	4:3	5:4		16:9	16:10	16:9
Pixel Pitch	0.297 mm x 0.297 mm	0.264 mm x 0.264 mm	0.293 mm x 0.293 mm	0.2265 mm x 0.221 mm	0.282 mm x 0.282 mm	0.2745mm x 0.2745mm
Number of Colors	16.7 million					
Brightness (white)	400 nits (cd/m <sup>2</sup> )	250 nits (cd/m <sup>2</sup> )				350 nits (cd/m <sup>2</sup> )
Viewing Angle (Hori/Vert)	170° / 170°	170° / 160°	178° / 178°		170° / 160°	178° / 178°
Contrast Ratio	1500:1	1000:1	1000:1 (typ); 20M:1 (dyn)	3000:1	1000:1 (typ); 10M:1 (dyn)	1000:1
Backlight Brightness half-life	60,000 hours		40,000 hours	50,000 hours		40,000 hours
<b>Video</b>						
Input Connectors	HD-15, DVI-I		HD-15, DVI-D	DVI-I, DisplayPort	HD-15, DVI-I	DVI-I, DisplayPort
Inputs using Adapter	HDMI, HDMI Mini, HDMI Micro, DisplayPort, DisplayPort Mini, BNC			HDMI, HDMI Mini, HDMI Micro, DisplayPort Mini, VGA, BNC	HDMI, HDMI Mini, HDMI Micro, DisplayPort, DisplayPort Mini, BNC	HDMI, HDMI Mini, HDMI Micro, DisplayPort Mini, VGA, BNC
Input Signal Formats**	RGB Analog, Sync Types: Separate (Sep), Composite (Comp), Sync on Green (SoG); DVI		RGB Analog, Sync Type: Separate; DVI	RGB, Sep, Comp, SoG; DVI; DisplayPort	RGB, Sync Types: Sep, Comp, SoG; DVI	RGB, Sep, Comp, SoG; DVI; DisplayPort
Horizontal / Vertical Scan	31-73 kHz / 50-75 Hz			24-82 kHz / 50-75 Hz		
Response Time	35 ms	5 ms	14 ms	25 ms	5 ms	14 ms
<b>Electrical</b>						
Monitor Input	100 to 240 VAC, 1.5/0.75 A, 60/50 Hz or 9.6 to 36.6 VDC, 2.5 to 0.65 A			100 to 240 VAC, 0.6/0.3 A, 60/50 Hz and 10.8 to 26.4 VDC, 2.3 to 0.9 A	100 to 240 VAC, 1.5/0.75 A, 60/50 Hz or 9.6 to 36.6 VDC, 2.5 to 0.65 A	100 to 240 VAC, 0.6/0.3 A, 60/50 Hz and 10.8 to 26.4 VDC, 2.3 to 0.9 A
Power Consumption	~16.8 W	~20 W	~16 W	~27 W	~26 W	~27 W
Power Management	< 4 W		< 0.5 W	< 2 W	< 0.5 W	< 2 W
<b>Environmental</b>						
Temperature	Operating: 0° to 50°C (32° to 122°F); Storage: -20° to 60°C (-4° to 140°F)					
Humidity	20% to 90% non-condensing					
Operating Shock	15 g, 6 msec, half-sine					
Vibration	Operating (sine): 1.0 g, swept sine 9-500 Hz; Transport (random): 0.1g <sup>2</sup> /Hz, 10-200 Hz; 0.03g <sup>2</sup> / Hz, 200-2000 Hz					
Altitude	Operating: up to 10,000 ft; Non-operating: up to 40,000 ft					
<b>Functional</b>						
Control Panel Buttons	Power On/Off button, Control Function buttons					
On-Screen Display Menus	Picture, Color, Image, OSD, Setup, Information (other options depending on model)					
<b>Physical</b>						
Enclosure Type	Self-contained enclosure					
Enclosure Rating	Black powder-coated carbon steel (black powder-coated aluminum rear cover): NEMA/UL Type 2 (IP22) or NEMA/UL Type 12/4 (IP65/IP66) Stainless steel: NEMA/UL Type 2 (IP22) or NEMA/UL Type 12/4/4X (IP65/IP66)					
Monitor Enclosure Bezel (W x H)	416.6 mm x 330.2 mm (16.4" x 13.0")	416.6 mm x 354.1 mm (16.4" x 13.94")	467.4 mm x 397.5 mm (18.4" x 15.65")	537.7 mm x 340.1 mm (21.17" x 13.39")	546.1 mm x 376.9 mm (21.5" x 14.84")	603.3 mm x 383.0 mm (23.75" x 15.08")
Depth	2.8" (4.6" with KVM)	3.25" (4.9" with KVM Extender)				
Net Weight	Carbon steel: 13 lbs. Stainless steel: 16 lbs.	Carbon steel: 15 lbs. Stainless steel: 18 lbs.	Carbon steel: 18 lbs. Stainless steel: 21 lbs.	Carbon steel: 19.6 lbs. Stainless steel: 22 lbs.	Carbon steel: 20 lbs. Stainless steel: 25 lbs.	Carbon steel: 26 lbs. Stainless steel: 30 lbs.
Shipping Weight	Carbon steel: 16 lbs. Stainless steel: 19 lbs.	Carbon steel: 18 lbs. Stainless steel: 21 lbs.	Carbon steel: 21 lbs. Stainless steel: 24 lbs.	Carbon steel: 25 lbs. Stainless steel: 27 lbs.	Carbon steel: 23 lbs. Stainless steel: 28 lbs.	Carbon steel: 32 lbs. Stainless steel: 32 lbs.
Window Options	All Models: • Single-Touch Resistive Touch Screen • Tempered Glass window (non-touch) • Acrylic window (non-touch) (n/a 19.5, 23.8)			HIS-UM19.5 and HIS-UM23.8 Models only: • Multi-Touch PCAP Touch Screen • Food Protection window (non-touch)		
<b>Compliances and Certifications</b>						
Electrical	UL/EN/IEC62368-1, UL/EN/IEC60950-1, UL Listed for US and Canada, FCC Class A, CAN ICES-3A/NMB-3A, CE, UKCA, NOM					
Environmental	IEC 60721-3 (Reliability), WEEE					
Enclosure	UL 50E					
Hazardous Location	I.T.E. for Class I, II, III, Division 2, Groups A, B, C, D, F, G; T-Code T4A	I.T.E. for Class I, II, III, Division 2, Groups A, B, C, D, F, G; T-Code T4	I.T.E. for Class I, II, III, Div. 2, Groups A, B, C, D, F, G; T-Code T5 (AC); T-Code T4A (DC)	I.T.E. for Class I, II, III, Division 2, Groups A, B, C, D, F, G; T-Code T5	I.T.E. for Class I, II, III, Div. 2, Groups A, B, C, D, F, G; T-Code T5 (AC); T-Code T4A (DC)	I.T.E. for Class I, II, III, Division 2, Groups A, B, C, D, F, G; T-Code T5

\* A full list of supported video standards may be found on our website.

\*\* NTSC/PAL composite input available. Call for details.

# Hope Industrial Systems, Inc.

## US / International

1325 Northmeadow Parkway, Suite 100  
Roswell, GA 30076  
United States

**Toll Free:** (877) 762-9790 | **International:** +1 (678) 762-9790 | **Fax:** +1 (678) 762-9789

**Sales and Customer Service:** [sales@HopeIndustrial.com](mailto:sales@HopeIndustrial.com)

**Support and Returns:** [support@HopeIndustrial.com](mailto:support@HopeIndustrial.com)

**Accounting Department:** [accounting@HopeIndustrial.com](mailto:accounting@HopeIndustrial.com)

[www.HopeIndustrial.com](http://www.HopeIndustrial.com)

## EU Authorized Representative:

Falcons Logistics B.V.  
Hoeksteen 26 F  
2132 MS Hoofddorp  
Netherlands

[HopeIndustrial.eu](http://HopeIndustrial.eu)

**Phone:** +31 20 241 0853

**Sales:** [sales@HopeIndustrial.eu](mailto:sales@HopeIndustrial.eu)

**Support:** [support@HopeIndustrial.eu](mailto:support@HopeIndustrial.eu)

**Accounting:** [accounting@HopeIndustrial.eu](mailto:accounting@HopeIndustrial.eu)

## United Kingdom Authorized Representative:

Falcon AR Services UK LTD  
Lynton House  
7-12 Tavistock Square  
WC1H 9LT London  
United Kingdom

[HopeIndustrial.co.uk](http://HopeIndustrial.co.uk)

**Phone:** +44 (0) 20 7193 2618

**Sales:** [sales@HopeIndustrial.co.uk](mailto:sales@HopeIndustrial.co.uk)

**Support:** [support@HopeIndustrial.co.uk](mailto:support@HopeIndustrial.co.uk)

**Accounting:** [accounting@HopeIndustrial.co.uk](mailto:accounting@HopeIndustrial.co.uk)

## France

Phone: +33 8 05 08 05 19  
[HopeIndustrial.fr](http://HopeIndustrial.fr)

## Germany

Phone: +49 800 001 0486  
[HopeIndustrial.de](http://HopeIndustrial.de)

## Italy

Phone: +39 80 0740414  
[HopeIndustrial.it](http://HopeIndustrial.it)

## Spain

Phone: +34 91 1438229  
[HopeIndustrial.es](http://HopeIndustrial.es)

## Mexico

Phone: +52 800 9531935  
[HopeIndustrial.mx](http://HopeIndustrial.mx)

